

(76)

MSC DOT NE OHIO

04

6-17-2025 95059-381311404

SETUP: SAM BTK+INFILL

SET 5/8 REBAR W/ ALUMINUM CAP" OPOT PRIMARY
CONTROL CP100"SET 5/8 REBAR W/ ALUMINUM CAP" OPOT PRIMARY
CONTROL CP101"

WITNESS: (CP101)

LENGTH BEARING, DESCRIPTION

① 15.9', S5°W, EDGE OF PAVEMENT

② 81.9', N83°W, NW CORNER OF CB CASTING
SCRIBED W/PAINT

③ 70.7', S67°E, MARK IN ASPHALT.

④ NO WITNESS'S AVAILABLE

CHECK IN

CHK101 (6.562') N = -0.002' E = 0.026' V = 0.004'

CHK101 (6.562') N = 0.000' E = 0.016' V = 0.019'

MSC DOT NE OHIO

04

6-17-2025 95059-381311404

(76)

START: 62,909 / 7:00 AM

CREW:

START SITE: 62,918 / 7:30 AM

AMD: 8.5 hrs

END SITE: 62,949 / 3:00 PM

DV: 8.5 hrs

END DAY: 62,960 / 3:30 PM

VN: 446444

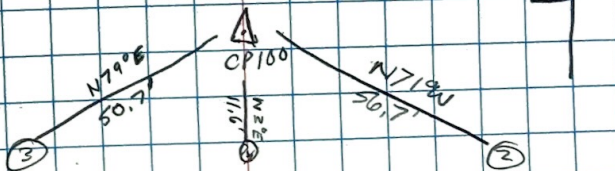
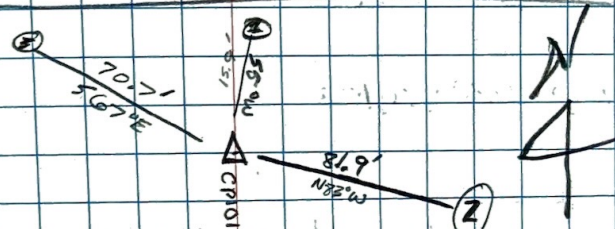
* PHOTOS FROM "CHK101" NEED TO BE ASSIGNED
TO PID: 101

BRIDGE = 9,000 → N/A

TOPO = 10,000 → 14.53

CONTROL = 100 → 101

PREFIX = I



OH

6-17-2025 95059-381311404

WITNESS: (CP100)

① 11.6, N30°E, EDGE OF ASPHALT, TOPO

MAG NAIL

② 56.7, N71°W, TOP OF MAG NAIL

③ 50.7, N79°E, TOP OF MAG NAIL

④ NO WITNESS'S AVAILABLE

1200 - SFNF (15' RADIUS)

1201 - SFNF (15' RADIUS)

TOPO START = 10,000

END TOPO = 10,153

CHECK OUT

CHK 1010 (6.562') N = -0.043' E = 0.010' V = 0.014'

CHK 1010 (6.562') N = 0.035' E = -0.013' V = 0.020'

OH

6-17-2025 95059-381311404

77

(78)

MSC MIDTRUCK PARKING

OH

6-18-2025 95059-38131404

SETUP: SAM RTK INFILL (CP100) (6562)

CHECKIN:

CHK101I(6562') N=-0.005' E=0.050' V=0.047'

CHK101I(6562') N=-0.014' E=0.064' V=0.040'

1220- 1/2" IRN/CAP YELLOW ATB COUNTY"

1202- BR SPIKE IN E OF ROAD

12219-SNF

TOPO START:

10154

CONNECT LINES (FROM PREVIOUS DAY)

10147 → 10156 (FEN)

10146 → 10155 (WOODS)

10144 → 10153 → 10162 (D)

10143 → 10152 → 10160 (S22)

10142 → 10150 → 10159 (TRI)

10154 → 10164

10149 → 10158 (EPS)

10148 → 10157 (EP)

REMOVE LINE BETWEEN

10205 → 10192

10204 → 10191

MSC MIDTRUCK PARKING

OH

6-18-2025 95059-38131404

(78)

START MILES: 62960	7:00AM	CREW:
SITE MILES: 62968	7:17AM	APPD: 6hrs
END SITE MILES: 63,004	1:10PM	DU: 6hrs
END DAY: 63,016	2:00PM	IN: 44644

79

MSE OHIO TRUCK PARKING

6-18-2025 OH
95059-38131140H

1218-5FNF

END TOPD: 10244

CHECKOUT

CHK 1010 (6.562') N = 0.080' E 0.074' V = 0.075'

CHK 1010 (6.562') N = 0.086' E 0.060' V = 0.053'

MSE OHIO TRUCK PARKING

6-18-2025 OH
95059-38131140H

79

(78)

MSC MIDTRUCK PARKING

OH

6-18-2025 95059-38131404

SETUP: SAM RTK INFILL (CP100) (6562)

CHECKIN:

CHK101I(6562') N=-0.005' E=0.050' V=0.047'

CHK101I(6562') N=-0.014' E=0.064' V=0.040'

1220- 1/2" IRN / CAP YELLOW AT B COUNTY "

1202- BR SPIKE IN E OF ROAD

12219-SNF

TOPO START:

10154

CONNECT LINES (FROM PREVIOUS DAY)

10147 → 10156 (FEN)

10146 → 10155 (WOODS)

10144 → 10153 → 10162 (D)

10143 → 10152 → 10160 (S22)

10142 → 10150 → 10159 (TRI)

10154 → 10164

10149 → 10158 (EPS)

10148 → 10157 (EP)

REMOVE LINE BETWEEN

10205 → 10192

10204 → 10191

MSC MIDTRUCK PARKING

OH

6-18-2025 95059-38131404

(78)

START MILES: 62960	7:00AM	CREW:
SITE MILES: 62968	7:17AM	APPD: 6hrs
END SITE MILES: 63,004	1:10PM	DU: 6hrs
END DAY: 63,016	2:00PM	IN: 46444

(79)

MSE OHIO TRUCK PARKING

6-18-2025

OH

95059-38131140H

1218-5FNF

END TOPD: 10244

CHECKOUT

CHK1010(6.562') N=0.080' E=0.074' V=0.075'

CHK1010(6.562') N=0.086' E=0.060' V=0.053'

MSE OHIO TRUCK PARKING

OH

6-18-2025 95059-38131140H

(79)

①

MSC ON TRUCK PARKING

6-19-2025 04
95059-38131404

SETUP: SAM RKT+INFILL (CP101) (6.562')

SHOTS TAKEN IN (20250618AMD)

CHECKIN:

RAINOUT 9:00AM

CHECKIN

$$0.024' \quad -0.020' \quad 0.029'$$

$$CHK1001(6.562') N = -0.005' E = 0.050' V = 0.047'$$

$$CHK1001(6.562') N = 0.015' E = -0.018' V = 0.015'$$

1302-SFNF

1303-SFNF

TOPO: 10245-10399

CHECKOUT

$$CHK1000(6.562') N = 0.017' E = -0.027' V = 0.064'$$

$$CHK1000(6.562') N = 0.016' E = -0.026' V = 0.064'$$

MSC ON TRUCK PARKING

6-19-2025 04
95059-38131404

①

START MILES: 63.018 / 7:04AM

START SITE MILES: 63.026 / 8:22AM

END SITE MILES: 63.092 / 1:40PM

END MILES: 63,362 / 8:00PM

CREW:

AMD=13hrs

DV=13hrs

VN=44644

①

MSC ON TRUCK PARKING

6-19-2025 04
95059-38131404

SETUP: SAM RTK+INFILL (CP101) (6.562')

SHOTS TAKEN IN (20250618AMD)

CHECKIN:

RAINOUT 9:00AM

CHECKIN

$$0.024' \quad -0.020' \quad 0.029'$$

$$CHK1001(6.562') N = -0.005' E = 0.050' V = 0.047'$$

$$CHK1001(6.562') N = 0.015' E = -0.018' V = 0.015'$$

1302-SFNF

1303-SFNF

TOPO: 10245-10399

CHECKOUT

$$CHK1000(6.562') N = 0.017' E = -0.027' V = 0.064'$$

$$CHK1000(6.562') N = 0.016' E = -0.026' V = 0.064'$$

MSC ON TRUCK PARKING

6-19-2025 04
95059-38131404

①

START MILES: 63.018 / 7:04AM

START SITE MILES: 63.026 / 8:22AM

END SITE MILES: 63.092 / 1:40PM

END MILES: 63,362 / 8:00PM

CREW:

AND=13hrs

DV=13hrs

VN=44644

①

MSC ON TRUCK PARKING

6-19-2025 04
95059-38131404

SETUP: SAM RKT+INFILL (CP101) (6.562')

SHOTS TAKEN IN (20250618AMD)

CHECKIN:

RAINOUT 9:00AM

CHECKIN

$$0.024' \quad -0.020' \quad 0.029'$$

$$CHK1001(6.562') N = -0.005' E = 0.050' V = 0.047'$$

$$CHK1001(6.562') N = 0.015' E = -0.018' V = 0.015'$$

1302-SFNF

1303-SFNF

TOPO: 10245-10399

CHECKOUT

$$CHK1000(6.562') N = 0.017' E = -0.027' V = 0.064'$$

$$CHK1000(6.562') N = 0.016' E = -0.026' V = 0.064'$$

MSC ON TRUCK PARKING

6-19-2025 04
95059-38131404

①

START MILES: 63.018 / 7:04AM

START SITE MILES: 63.026 / 8:22AM

END SITE MILES: 63.092 / 1:40PM

END MILES: 63,362 / 8:00PM

CREW:

AND=13hrs

DV=13hrs

VN=44644

(1)

MSC OUTO TRUCK PARKING

OH

6-23-2025 95059-38131404

SETUP: SAM FINK + IN FILL (CPI01) (6.562')

CHECK IN:

CHK101I(6.562') N = -0.006' E = -0.015' V = 0.062'

CHK101I(6.562') N = 0.010' E = -0.013' V = 0.039'

TOPO START: 10,400

1217- SENE WITHIN 10' IN FENCE LINE

10,238 → 10,400 (WOOD SR) CONTINUE LINE

10,240 → 10,401 (D) CONTINUE LINE

10,234 → 10,402 (FEN) CONTINUE LINE

END TOPO = 10,465

SET 3" 5/8 IR W/RED CAP "SAM LLC CONTROL" (105)

SET MAG NAIL IN EDGE OF PAVEMENT (105)

CHECK OUT

CHK1000(6.562') N = -0.034' E = -0.024' V = 0.016'

CHK1000(6.562') N = -0.027' E = 0.015' V = 0.006'

(2)

MSC TRUCK PARKING

OH

6-23-2025 95059-38131404

START MILES: 63,362 / 6:30 AM CREW:
 START SITE MILES: 63,654 / 12:20 PM AMO = 11 hrs
 END SITE MILES: 63,675 / 5:00 PM DV = 11 hrs
 END DAY MILES: 63,684 / 5:30 PM VN = 446444

- REQUIREMENTS PER ERIC ARQUETTE & JOHN KAMENSKI
 WOOD CINE & ANY EARTH SHOTS @ 100' to 300'
 EP & EPS @ 50'

- REQUIRED BY CASEY WILSON
 BRIDGE (REFLECTORLESS)
 ROAD SURFACE (EP, EPS, PAINT)
 2 OUTSIDE MOST "I" BEAMS

* NOTE *

STATIC SESSION DROPPED BECAUSE
 BASE SWITCHED TO INTERNAL BATTERY

(3)

MSC DOT TRUCK PARKING

OH

6-24-2025 95059-38131140H

SETUP T/S @ CP102 (5.26') H = 0.084' V = 0.056'
 B/S @ CP100 (5.238') TRUE HEIGHT

CHECK BOTTOM OF PRISM
 TRUE HEIGHT

CHK103 (6.14') N = -0.009' E = -0.044' V = 0.022'

TOPO = 10466 - 10485

* REFLECTORLES OR ROD/PRISM

CHECK OUT BOTTOM OF PRISM

CHK1030 (6.565.7') H = -0.122' E = -0.016' V = 0.040'

B/S/CHK1000 (5.238') H = -0.003' E = -0.051' V = 0.053'

BASE SETUP @ CP100 (6.562') * TEL 450

CHECK IN

CHK101I (6.562') N = 0.039' E = 0.054' V = 0.008'

CHK101I (6.562') N = 0.043' E = 0.056' V = 0.018'

TOPO START:

10486

TOPO STOP

10853

MSC DOT TRUCK PARKING

OH

6-24-2025 95059-38131140H

START MILES: 63,685 / 7:00 AM
 START STEMMILES: 63,694 / 7:25 AM
 END MILES: 63,714 5:25 PM
 END DAY: 63,723 / 6:00 PM

CREW:

AMD = 11hrs

DV = 11hrs

W. 446444

CHECK OUT

CHK1010 (6.562') N = -0.024' E = 0.026' V = 0.007'

CHK1010 (6.562') N = -0.019' E = 0.011' V = 0.031'

(4)

MSC DOT TRUCK PARKING

6-25-2025

OH

95059-381311404

PASE SETUP @ CPI01 (6.562')

CHECK IN

CHK1001 (6.562') N=0.037' E=-0.024' V=0.090'

CHK1001 (6.562') N=0.023' E=-0.025' V=0.086'

TOPO START: 10,854

END TOPO: 11,217

CHECK OUT

CHK1000 (6.562') N=0.017' E=0.047' V=0.032'

CHK1000 (6.562') N=0.006' E=-0.051' V=0.023'

MSC DOT TRUCK PARKING

(4)

6-25-2025

OH

95059-381311404

START MILES: 63,724 / 7:00 AM

CARU:

START AT MILES: 63,735 / 7:32 AM

AMD=10 hrs

END SITE MILES: 63,745 / 4:28 PM

DU=10 hrs

END DAY: 63,754 / 5:00 PM

VN=446444

(20)

MSC DOT TRUCK PARKING

OH

7-9-2025

95059-381311404

SETUP: SAMARK (TOLUSO)

CHECK IN

CHK 100I (6.562') N = -0.100' E = -0.056' V = 0.009'

CHK 100J (6.562') N = -0.004' E = -0.067' V = 0.019'

POINTS DELETED: 20271, 20272, 20442

800-5/8" IR W/NO CAP

801-5/8" IR W/YELLOW CAP "KOSTE PS. 8167"

802-5/8" IR W/YELLOW CAP "KOSTE PS. 8167"

CHECKOUT

CHK 1000 (6.562') N = -0.004' E = -0.061' V = 0.032'

CHK 1000 (6.562') N = -0.057' E = -0.058' V = 0.028'

MSC DOT TRUCK PARKING

OH

7-9-2025

95059-381311404

START DAY: 65069/7:00AM

START SITE: 65,080/7:30AM

END SITE: 65,025/5:10PM

END DAY: 65,131/6:00PM

CREW:

AMD = 11 hrs

DV = 11 hrs

VN = 446444

(20196)

TOP: 20271-20442

PROPERTY CORNERS: 800-802

7-10-2025 95059-3813/1404

SETUP: SAWHOLE (TOL450)

CHECKIN:

CH1001 (6.562) N=-0.085'

E=+0.072'

W=0.055'

CH1001 (6.562) N=-0.088'

E=-0.077'

W=0.043'

805- WOODEN POST SET IN CONCRETE

814- REFERENCE POINT w/ORANGE CAP

805- REFERENCE POINT w/ORANGE CAP

806- SIGN

DELETE POINTS: 20493, 808, 807,

235- FOUND BUT NOT ACCESSIBLE

234- FOUND BUT NOT ACCESSIBLE

236- NOT FOUND

238- "863&804" REF POINTS

239- EVIDENCE OF PRESENCE & NOT ACCESSIBLE

240- NOT FOUND & NOT ACCESSIBLE

241- NOT FOUND

04

7-10-2025 95059-3813/1404

START DAY: 6/5/32/7:00 AM

START DATE: 6/5/142/7:30 AM

END DATE: 6/5/163/12:00 PM

END DAY: 6/5/405/5:00 PM

PROPERTY OWNERS: 802-806

TOPD: 20,443-20,521

CASE:

AMP: 10hrs

DM: 10hrs

IN: 46544

(22)

MSC 600 TRUCK PARKING

7-14-2025

OH

95059-38131140H

SETUP: SAMARK (TOLUO) (104) (6.562')

CHECKIN:

CHK1000 (6.562') N = -0.031' E = -0.073' V = 0.033'

CHK1001 (6.562') N = -0.026' E = -0.072' V = 0.018'

TOPO: 20522 - 20692

PCORS: 807 - 808

807 - 5/8" IR W / CHEWED YELLOW CAP "NOTOP"

808 - 5/8" IR W / RED CAP "ILLEGEBEL"

@ 100PM - DIRECTED BY JOHN KAMENSKI
TO NO LONGER LOOK FOR PROPERTY CORNERS
"JUST NEED THE TOPO COMPLETED AT THIS
POINT"

CHECKOUT

CHK1000 (6.562') N = -0.043' E = -0.075' V = 0.024'

CHK1001 (6.562') N = -0.043' E = -0.069' V = 0.029'

(23)

MSC 600 TRUCK PARKING

7-14-2025

OH

95059-38131140H

START DAY: 65,405 / 7:00 AM

START SITE: 65,650 / 11:34 AM

END SITE: 65,657 / 4:40 PM

END DAY: 65,666 / 5:30 PM

CREW:

AMD = 10.5 hrs

DI = 10.5 hrs

VN = 446444

(23)

MSC007 TRUCK PARKING

OH

7-15-2025

95059-38131140H

SETUP: SAMRTIC (TDL450)

CHECK IN

CHK101I (6.562') N=0.077' E=0.129' V=0.007'

CHK101I (6.562') N=0.082' E=0.129' V=0.022'

TOPO-20693-20938

CHECKOUT

CHK1010 (6.562') N=0.028' E=0.100' V=0.026'

CHK1010 (6.562') N=0.031' E=0.086' V=0.026'

CHECKOUT AGAIN

CHK1010 (6.562') N=-0.108' E=0.094' V=0.021'

CHK1010 (6.562') N=0.123' E=0.099' V=0.002'

CHK1010 (6.562') N=0.056' E=0.090' V=0.007'

CHK1010 (6.562') N=0.057' E=0.073' V=0.009'

METRUCK PARKING ORIST

OH

7-15-2025

95059-38131140H

START DAY: 65,667 / 7:00 AM

START SITE: 65,676 / 7:20 AM

END SITE: 65,686 / 5:18 PM

END DAY: 65,929 / 10:00 PM

CREW:

AMAS=15hrs

DV=15hrs

VN=446CRAT